

SOLID / WATERPROOF

SOLID

Technical data | Technische Daten | Données Techniques

Technical data shown below are average values of the current production Die angegebenen technischen Daten sind Durchschnittswerte der laufenden Produktion Les données techniques ci-dessous sont des valeurs moyennes de la production courante	SOLID	
Fabric Gewebe Tissu		Acrylic 100%, solution dyed Acryl 100%, spinnfärbung Acrylique, 100% teint masse
Finishing Ausrüstung Traitement		Teflon - Cleangard
Weight Gewicht Poids total	DIN EN 12127	~ 300 g/m ²
Width Warenbreite Laize		120 cm
Colour fastness Farblichkeit Solidité des coloris	DIN EN ISO 105-B02	7-8 / 8
Oil repellency Ölabweisung Oléofugation	EN ISO 14419	4-5
Water repellency Wasserabweisung Résistance au mouillage superficiel	EN 4920	100
Water column Wassersäule Colonne d'eau	EN 20 811	~ 330 mm
Tensile strength (daN/5 cm) Höchstzugkraft (daN/5 cm) Résistance à la rupture (daN/5 cm)	DIN EN ISO 13934-1	~ 140 / 95
Tear resistance (daN) Weft / Warp Weiterreißkraft (daN) Schuss / Kette Résistance à la déchirure (daN) Trame / Chaîne	EN ISO 13937-2	2.3 / 4

WATERPROOF

Technical data | Technische Daten | Données Techniques

Technical data shown below are average values of the current production Die angegebenen technischen Daten sind Durchschnittswerte der laufenden Produktion Les données techniques ci-dessous sont des valeurs moyennes de la production courante	WATERPROOF	
Fabric Gewebe Tissu		Acrylic 100%, solution dyed Acryl 100%, spinnfärbung Acrylique 100% teint masse
Finishing Ausrüstung Traitement		Teflon - Cleangard
Weight Gewicht Poids total	DIN EN 12127	~ 330 g/m ²
Width Warenbreite Laize		120 cm
Colour fastness Farblichkeit Solidité des coloris	DIN EN ISO 105-B02	7-8 / 8
Oil repellency Ölabweisung Oléofugation	EN ISO 14419	4-5
Water repellency Wasserabweisung Résistance au mouillage superficiel	EN 4920	100
Water column Wassersäule Colonne d'eau	EN 20 811	~ 1000 mm
Tensile strength (daN/5 cm) Höchstzugkraft (daN/5 cm) Résistance à la rupture (daN/5 cm)	DIN EN ISO 13934-1	~ 140 / 95
Tear resistance (daN) Weft / Warp Weiterreißkraft (daN) Schuss / Kette Résistance à la déchirure (daN) Trame / Chaîne	EN ISO 13973-2	3 / 4

Clean & Care | Reinigung & Pflege | Lavaggio & Conservazione



Never clean with high-pressure cleaners
Niemals mit Hochdruckreinigern behandeln
Ne jamais nettoyer avec des nettoyeurs à haute pression



Never roll up or fold whilst wet
Niemals feucht einrollen oder zusammenklappen
Ne jamais enrouler ou plier en état mouillé



Remove loose dirt regularly
Lösen Schmutz regelmäßig entfernen
Éloigner les salissures régulièrement



Clean with a mild soapy water solution
Mit Wasser und milder Seifenlauge reinigen
À nettoyer avec de l'eau et de la lessive douce



SOLID

SOLID



BLANCO
2042

UV: 97%
Gtot: 18%



NATURAL
2929

UV: 97%
Gtot: 18%



MARFIL
2143

UV: 97%
Gtot: 16%



SIROCO
2226

UV: 98%
Gtot: 12%



VANILLA
2687

UV: 97%
Gtot: 17%



AMBER BEIGE
0814

UV: 99%
Gtot: 15.66%



BEIGE
2038

UV: 99%
Gtot: 11%



INTEGRAL
2838

UV: 99%
Gtot: 8%



AVENA
2296

UV: 98%
Gtot: 11%



MINERAL
2831

UV: 99%
Gtot: 7%



MARBLE
0923

UV: 99%
Gtot: 12.8%

SOLID

SOLID



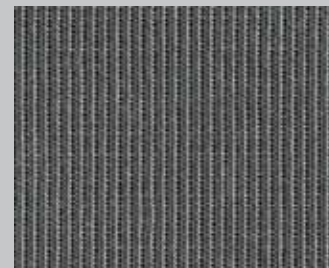
MULTICO FLAME
7131

UV: 90%
Gtot: 17%



NUAGES FLAME
6319

UV: 90%
Gtot: 16%



TWEED ROCK
7151

UV: 98%
Gtot: 11%



CAFE
2316

UV: 99%
Gtot: 5%



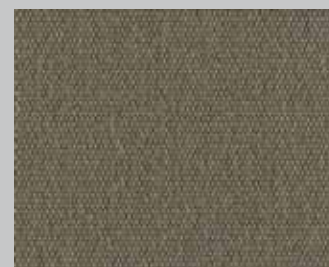
BERNA
2041

UV: 97%
Gtot: 16%



TWEED LATTE
7926

UV: 98%
Gtot: 15%



VISION
2250

UV: 99%
Gtot: 7%



CHAUME PIGUE
U235

UV: 100%
Gtot: 9%



IRON
0937

UV: 99%
Gtot: 6.57%



TWEED BROWN
0403

UV: 99%
Gtot: 6.82%



LIN MELANGE
8904

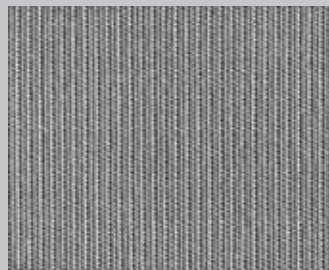
UV: 95%
Gtot: 11%

SOLID

SOLID



SNOWFLAKE UV: 95%
3463 Gtot: 22%



TWEED ARGENT UV: 98%
0794 Gtot: 19%



DARK LINEN UV: 98%
6727 Gtot: 18%



SILVER WHITE UV: 99%
0364 Gtot: 7.67%



SILVER UV: 97%
2821 Gtot: 13%



SILVER GREY UV: 90%
U190 Gtot: 15%



SILVER MELANGE UV: 99%
0028 Gtot: 7.36%



STITCH ANDESITE UV: 98%
0512 Gtot: 8%



PERLA UV: 97%
2979 Gtot: 8%



PIETRA BEIGE UV: 98%
9415 Gtot: 8%



ZINC UV: 99%
2802 Gtot: 11%

SOLID

SOLID



ASH
0638

UV: 99%
Gtot: 5.05%



ANTRACITA
8488

UV: 99%
Gtot: 6%



EBONY TWEED
7324

UV: 98%
Gtot: 10%



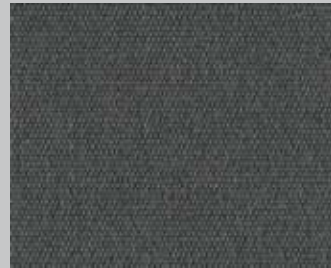
NEGRO
2170

UV: 99%
Gtot: 5%



GRAPHITE ZIP
1524

UV: 98%
Gtot: 12%



BASALT
8203

UV: 100%
Gtot: 5%



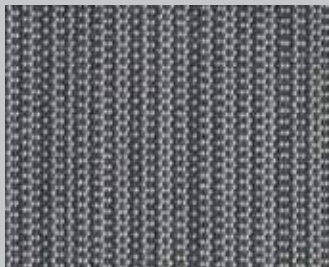
FLANELLE
U104

UV: 100%
Gtot: 5%



CHARCOAL TWEED
0402

UV: 99%
Gtot: 5%



ZIP GREY
1597

UV: 98%
Gtot: 13%



STITCH CALCITE
0505

UV: 98%
Gtot: 9%



PLATINUM
0715

UV: 90%
Gtot: 12%

SOLID

SOLID



WHITE LINEN
8615

UV: 95%
Gtot: 18%



BREEZE
2777

UV: 99%
Gtot: 6%



AZUL
2018

UV: 99%
Gtot: 7%



MARINE
2145

UV: 99%
Gtot: 5%



PIMENT PIGUE
U412

UV: 100%
Gtot: 10%



BRIGHT RED
2211

UV: 99%
Gtot: 10%



RIOJA
2210

UV: 99%
Gtot: 8%



CARMIN PIGUE
U411

UV: 100%
Gtot: 10%



SWITCH ROUGE
U390

UV: 100%
Gtot: 8%



GRANATE
2101

UV: 99%
Gtot: 6%



STITCH RUBY
0507

UV: 98%
Gtot: 9%

SOLID

SOLID



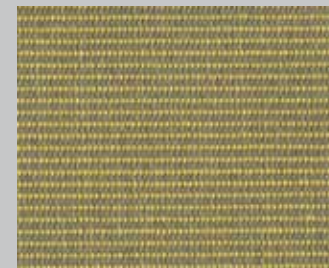
MARSEILLE FLAME UV: 100%
8854 Ctot: 11%



AMARILLO UV: 99%
2013 Ctot: 15%



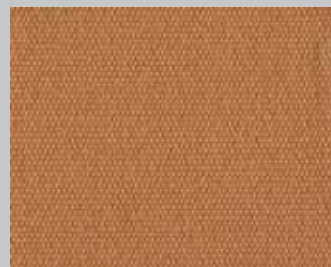
ORANGE UV: 99%
2050 Ctot: 13%



TWEED SENAPE UV: 99%
0034 Ctot: 6.3%



CURRY UV: 100%
U105 Ctot: 12%



OCRE UV: 99%
2180 Ctot: 13%



POTIRON PIGUE UV: 100%
U413 Ctot: 10%



MELEZE PIGUE UV: 100%
U417 Ctot: 8%



JADE UV: 99%
0396 Ctot: 8.12%



VERDE BOTELLA UV: 99%
2245 Ctot: 6%



SWITCH EMPIRE UV: 100%
U393 Ctot: 8%

WATERPROOF



BLANCO
8268

UV: 97%
Gtot: 18%



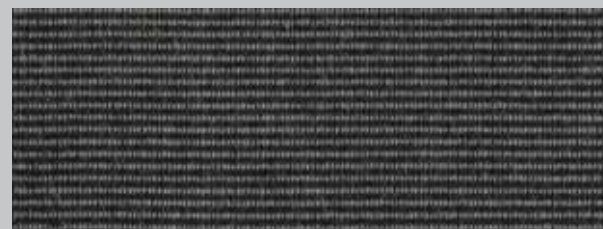
GRIS
8271

UV: 99%
Gtot: 7%



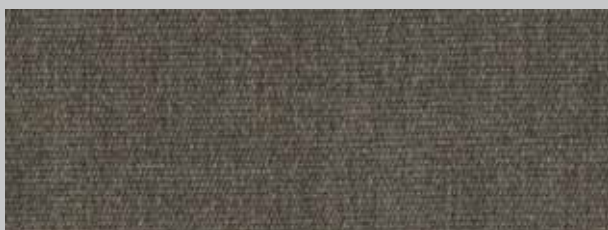
MARFIL
8272

UV: 97%
Gtot: 16%



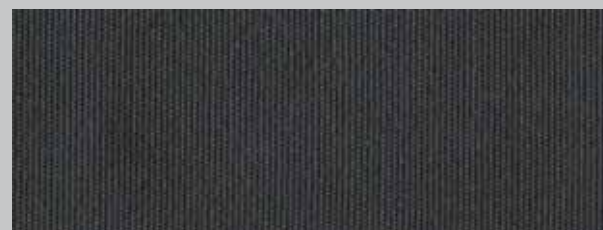
TWEED NEGRO
2085

UV: 99%
Gtot: 6%



COCO
2047

UV: 99%
Gtot: 9%



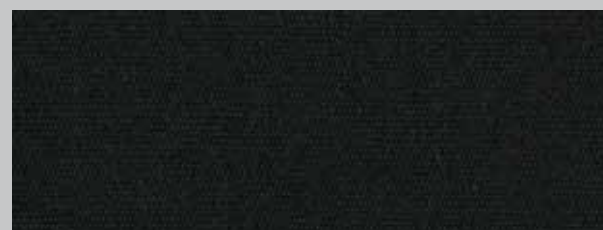
ANTRACITA
2796

UV: 99%
Gtot: 6%



AMARILLO
8265

UV: 99%
Gtot: 15%



NEGRO
8275

UV: 99%
Gtot: 5%



FABRICS CATALOGUE

ORCHESTRA / URBAN / LANDSCAPE MINI / LANDSCAPE

ORCHESTRA

Technical data | Technische Daten | Données Techniques

Technical data shown below are average values of the current production Die angegebenen technischen Daten sind Durchschnittswerte der laufenden Produktion Les données techniques ci-dessous sont des valeurs moyennes de la production courante	ORCHESTRA	
Fabric Gewebe Tissu		Acrylic 100%, solution dyed Acryl 100%, spinnfärbung Acrylique 100% teint masse
Finishing Ausrüstung Traitement		Teflon - Cleangard
Weight Gewicht Poids total	ISO 3801	~ 290 g/m ²
Width Warenbreite Laize		120 cm
Colour fastness Farbechtheit Solidité des coloris	ISO 105 B02	7-8 / 8
Water repellency Wasserabweisung Résistance au mouillage superficiel	ISO 4920	100
Water column Wassersäule Colonne d'eau	ISO 20811	>350 mm
Tensile strength (daN/5 cm) Höchstzugkraft (daN/5 cm) Résistance à la rupture (daN/5 cm)	ISO 13934-1	140 / 90
Tear resistance (daN) Weft / Warp Weiterreißkraft (daN) Schuss / Kette Résistance à la déchirure (daN) Trame / Chaîne	ISO 13937-1	4 / 2.3

URBAN & LANDSCAPE MINI & LANDSCAPE

Technical data | Technische Daten | Données Techniques

Technical data shown below are average values of the current production Die angegebenen technischen Daten sind Durchschnittswerte der laufenden Produktion Les données techniques ci-dessous sont des valeurs moyennes de la production courante		URBAN	LUMERA LANDSCAPE MINI LANDSCAPE
Fabric Gewebe Tissu	DIN 60 001	PAC	PAC
Weight Gewicht Poids total	DIN EN ISO 12127	~ 290 g/m ²	~ 290 g/m ²
Width Warenbreite Laize		120 cm	120 cm
Colour fastness Farbechtheit Solidité des coloris	DIN EN ISO 105-B02	min. 7/8	min. 7/8
Water repellency Wasserabweisung Résistance au mouillage superficiel	EN 24 920	100	100
Water column Wassersäule Colonne d'eau	EN 20 811	370 mm	460 mm
Tensile strength (daN/5 cm) Höchstzugkraft (daN/5 cm) Résistance à la rupture (daN/5 cm)	DIN EN ISO 13934-1	145 / 100	160 / 120

Clean & Care | Reinigung & Pflege | Lavaggio & Conservazione



Never clean with high-pressure cleaners
Niemals mit Hochdruckreinigern behandeln
Ne jamais nettoyer avec des nettoyeurs à haute pression



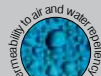
Never roll up or fold whilst wet
Niemals feucht einrollen oder zusammenklappen
Ne jamais enrouler ou plier en état mouillé



Remove loose dirt regularly
Lösen Schmutz regelmäßig entfernen
Éloigner les salissures régulièrement



Clean with a mild soapy water solution
Mit Wasser und milder Seifenlaug reinigen
À nettoyer avec de l'eau et de la lessive douce



UV STANDARD 80
ISO 10122
EN 60811

ORCHESTRA

ORCHESTRA



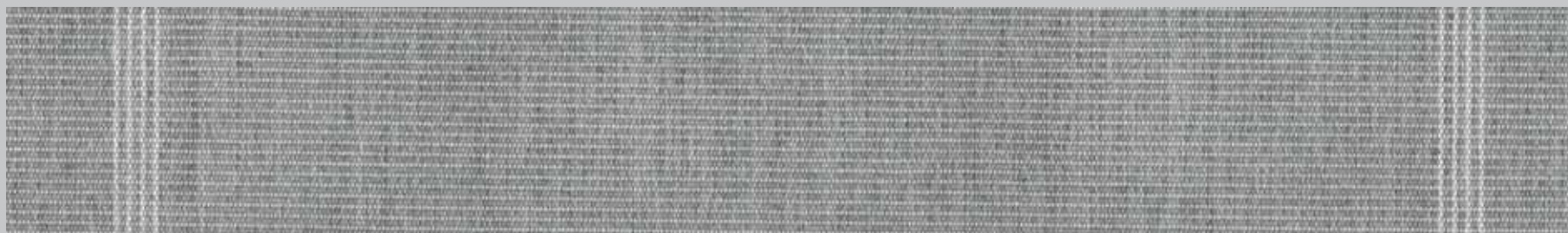
NAPLES LINEN
D307

RAPORT: 20 cm
UV: 95%
Gtot: 13%



NAPLES HEATHER
D305

RAPORT: 20 cm
UV: 90%
Gtot: 11%



NAPLES LIGHT GREY
D304

RAPORT: 20 cm
UV: 90%
Gtot: 11%



NAPLES STONE
D113

RAPORT: 20 cm
UV: 95%
Gtot: 7%

ORCHESTRA

ORCHESTRA



PENCIL BEIGE
D324

RAPORT: 30 cm
UV: 95%
Gtot: 14%



PENCIL YELLOW
D323

RAPORT: 30 cm
UV: 95%
Gtot: 13%



PENCIL GREY
D320

RAPORT: 30 cm
UV: 95%
Gtot: 14%



PENCIL DARK GREY
D319

RAPORT: 30 cm
UV: 100%
Gtot: 8%

ORCHESTRA

ORCHESTRA



WIDE CHINE BEIGE
D301

RAPORT: 60 cm
UV: 95%
Gtot: 12%



WIDE CHINE YELLOW
D300

RAPORT: 60 cm
UV: 95%
Gtot: 13%



WIDE CHINE GREEN
D299

RAPORT: 60 cm
UV: 95%
Gtot: 10%



THEMES

URBAN / LANDSCAPE MINI / LANDSCAPE

SPECIAL THEMES BY SATTLER

URBAN

EN: Also in cities, we can find textures that are harmoniously incorporated into the designs whilst emphasizing the prevailing architecture.

DE: Auch in Städten können wir Texturen finden, die harmonisch in die Dessins einfließen und die vorherrschende Architektur unterstreichen.

FR: En regardant les paysages autour de nous, on repère des structures uniques qui mettent leur cachet sur notre environnement.



LANDSCAPE MINI

EN: Let's take a look to the landscapes in our surroundings; we will recognize unique structures that decisively shape the environment.

DE: Schauen wir uns in den umgebenden Landschaften näher um, erkennen wir Strukturen, die einzigartig sind und die Ihre Umgebung maßgeblich prägen.

FR: En regardant les paysages autour de nous, on repère des structures uniques qui mettent leur cachet sur notre environnement.



LANDSCAPE

EN: These designs were inspired by landscapes with manifold surfaces and vegetation but also by the predominant light conditions.

DE: Landschaften mit ihren vielfältigen Oberflächen, ihrer Vegetation aber auch mit dem vorherrschenden Licht waren Vorbilder dieser Dessins.

FR: Des paysages aux surfaces variées, avec leur végétation spécifique mais aussi la lumière dominante, constituent l'inspiration de ces dessins.



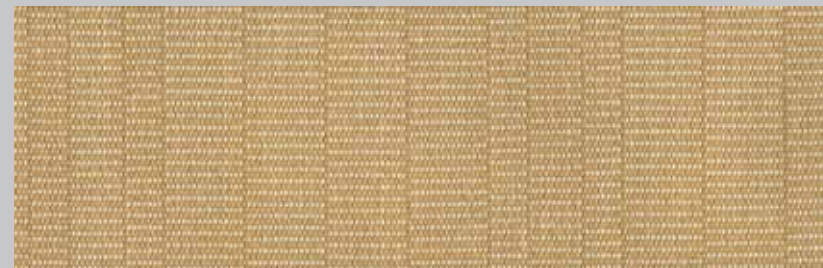
URBAN

URBAN



CANDLELIGHT
0990

RAPORT: 6 cm
UV: 99%
Gtot: 14%



LANTERN
0991

RAPORT: 6 cm
UV: 99%
Gtot: 14.2%



TIMBER
0992

RAPORT: 6 cm
UV: 99%
Gtot: 9.6%



CONCRETE
0993

RAPORT: 6 cm
UV: 99%
Gtot: 10.8%

LANDSCAPE MINI



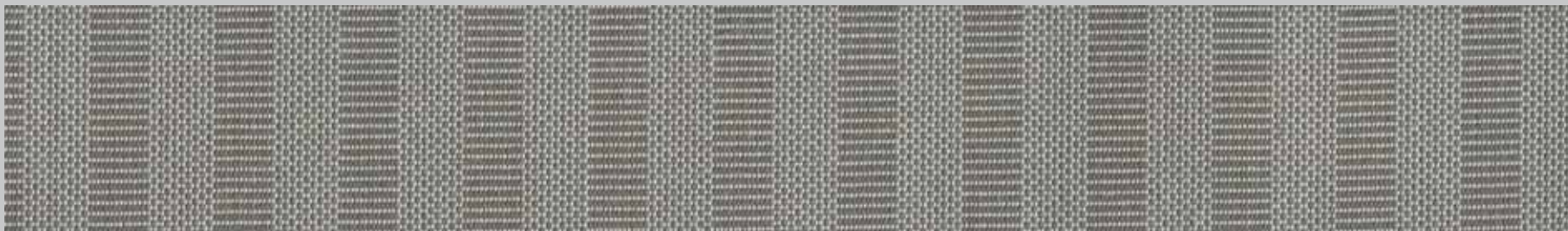
SAND
4620

RAPORT: 2 cm
UV: 99%
Gtot: 11.4%



LAVA
4623

RAPORT: 2 cm
UV: 99%
Gtot: 8.3%



CLAY
4627

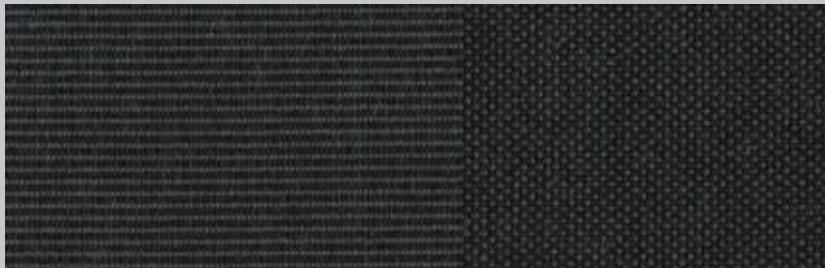
RAPORT: 2 cm
UV: 99%
Gtot: 11.3%



GRAVEL
4621

RAPORT: 2 cm
UV: 99%
Gtot: 8.1%

LANDSCAPE



VULCANO
4665

RAPORT: 24 cm
UV: 99%
Gtot: 5%



LADAKH
4655

RAPORT: 24 cm
UV: 99%
Gtot: 5.91%



FJORD
4644

RAPORT: 24 cm
UV: 99%
Gtot: 7.8%



CLIFFS
4643

RAPORT: 24 cm
UV: 99%
Gtot: 6.78%

LANDSCAPE



ROSOPSIDA
4657

RAPORT: 24 cm
UV: 99%
Gtot: 14.96%



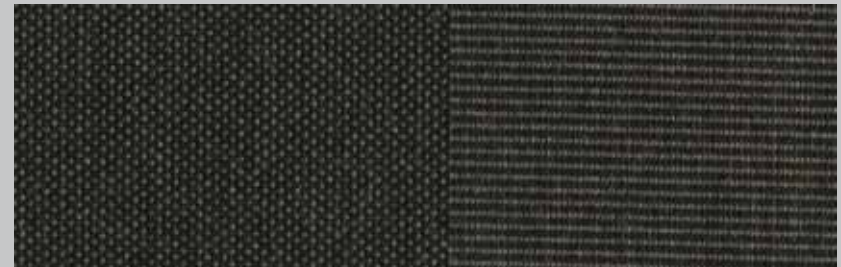
GOBI
4658

RAPORT: 24 cm
UV: 99%
Gtot: 11.32%



SAHARA DUST
4639

RAPORT: 24 cm
UV: 99%
Gtot: 10.18%



NAMIB
4640

RAPORT: 24 cm
UV: 99%
Gtot: 5.04%



BEACH
4662

RAPORT: 24 cm
UV: 99%
Gtot: 16.37%



CLASSICAL / FANTASY

CLASSICAL & FANTASY

Technical data | Technische Daten | Données Techniques

Fabric Gewebe Tissu		Acrylic 100%, solution dyed Acryl 100%, spinnfärbung Acrylique 100% teint masse
Finishing Ausrüstung Traitement		Teflon - Cleangard
Weight Gewicht Poids total	DIN EN 12127	~ 300 g/m ²
Width Warenbreite Laize		120 cm
Colour fastness Farbechtheit Solidité des coloris	DIN EN ISO 105-B02	7-8 / 8
Oil repellency Ölabweisung Oléofugation	EN ISO 14419	4-5
Water repellency Wasserabweisung Résistance au mouillage superficiel	EN ISO 4920	100(5)
Tensile strength (daN/5 cm) Höchstzugkraft (daN/5 cm) Résistance à la rupture (daN/5 cm)	DIN EN ISO 13934-1	~ 140 / 95
Tear resistance (daN) Weft / Warp Weiterreißkraft (daN) Schuss / Kette Résistance à la déchirure (daN) Trame / Chaîne	EN ISO 13973-2	2,3 / 4

Clean & Care | Reinigung & Pflege | Lavaggio & Conservazione



Never clean with high-pressure cleaners
Niemals mit Hochdruckreinigern behandeln
Ne jamais nettoyer avec des nettoyeurs à haute pression



Never roll up or fold whilst wet
Niemals feucht einrollen oder zusammenklappen
Ne jamais enrouler ou plier en état mouillé



Remove loose dirt regularly
Lösen Schmutz regelmäßig entfernen
Éloigner les salissures régulièrement



Clean with a mild soapy water solution
Mit Wasser und milder Seifenlauge reinigen
À nettoyer avec de l'eau et de la lessive douce

Subject to change in view of technical upgrades. Values indicated without tolerance levels are nominal values with tolerance range of ±5%. All data presented here is given to the best of our current knowledge for guidance purposes and is not legally binding.

Änderungen die dem technischen Fortschritt dienen, behalten wir uns vor. Werte ohne Toleranzangaben sind Nennwerte mit einer Toleranz von ±5%. Die Angaben entsprechen unserem heutigen Kenntnisstand und sollen ohne Rechtsverbindlichkeit informieren.

Sous réserve de toute modification dans le cadre d'admnéliorations techniques. Les valeurs mentionnées sans tolérance sont des valeurs nominales avec une tolérance de ±5%. Les indications correspondent à notre savoir actuel et sont données à titre informatif sans obligation juridique.



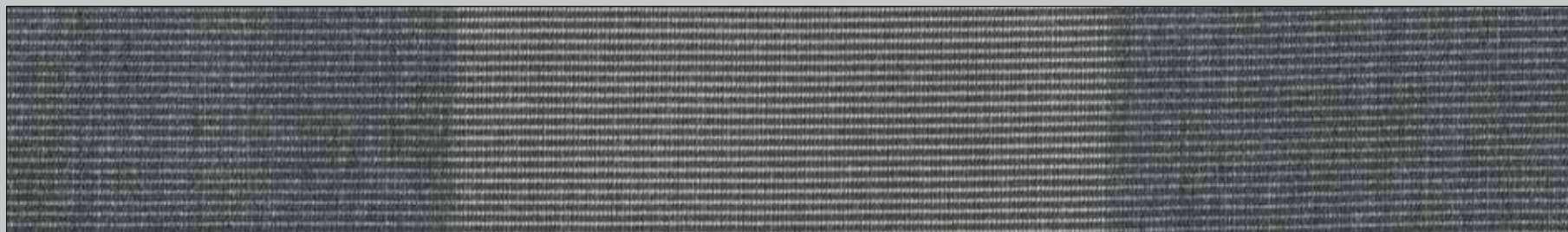
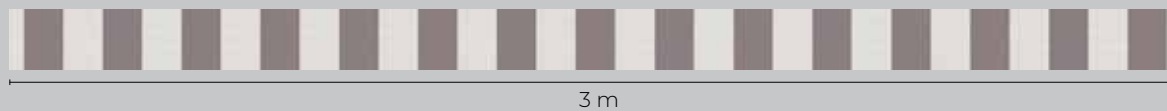
CLASSICAL

CLASSICAL



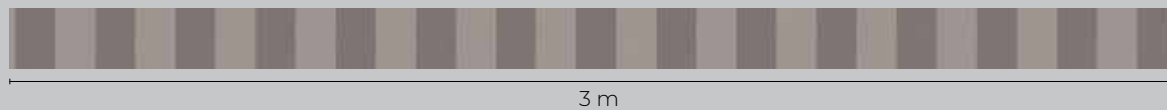
CLASSICAL GRIS
2103

RAPORT: 20 cm
UV: 97%
Gtot: 16%



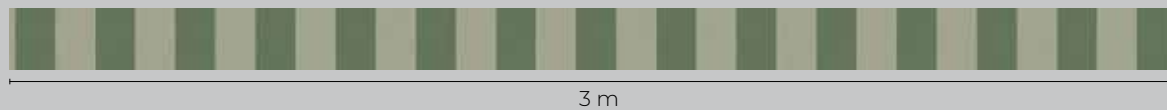
CLASSICAL STONE TWEED
0597

RAPORT: 20 cm
UV: 98%
Gtot: 12%



CLASSICAL MOSSY TWEED
9878

RAPORT: 20 cm
UV: 98%
Gtot: 15%



CLASSICAL

CLASSICAL



CLASSICAL AMARILLO
2015

RAPORT: 20 cm
UV: 97%
Gtot: 15%



3 m

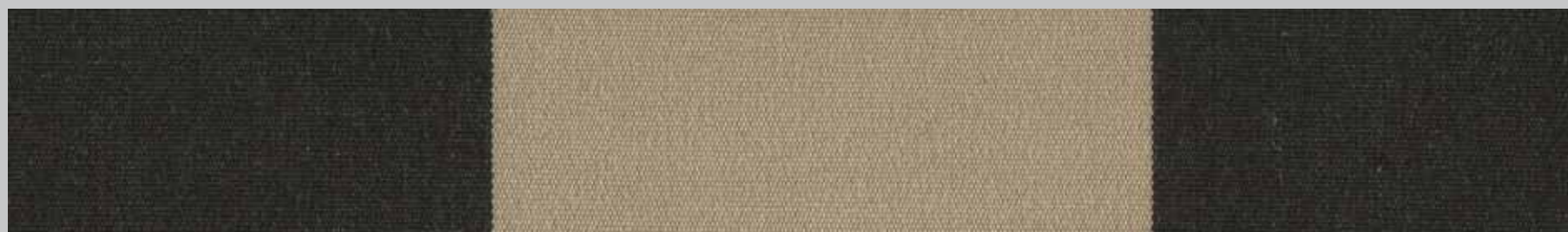


CLASSICAL BEIGE
2275

RAPORT: 20 cm
UV: 98%
Gtot: 14%



3 m



CLASSICAL MARRON BEIGE
2148

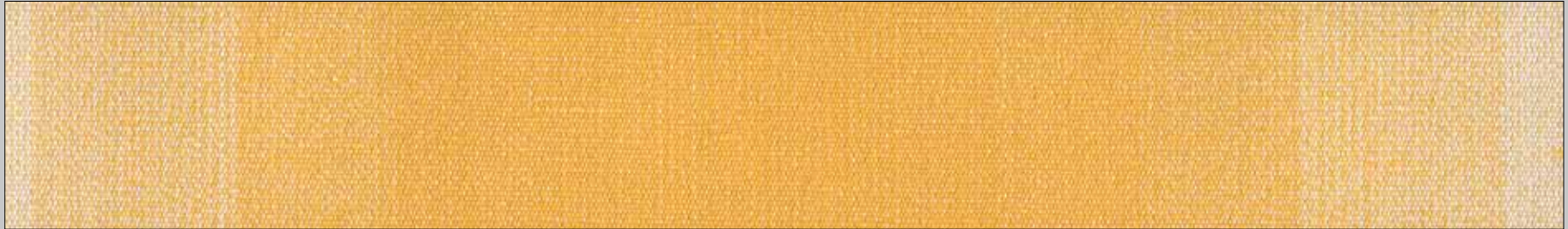
RAPORT: 20 cm
UV: 99%
Gtot: 9%



3 m

FANTASY

FANTASY



MILANO
3868

RAPORT: 30 cm
UV: 95%
Gtot: 22%



3 m



CALGARY
6712

RAPORT: 30 cm
UV: 95%
Gtot: 16%



3 m



SUNRISE
0180

RAPORT: 30 cm
UV: 99%
Gtot: 14.73%



3 m

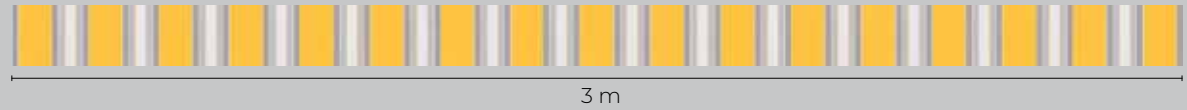
FANTASY

FANTASY



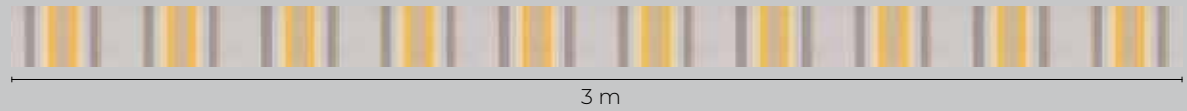
PALERMO
3605

RAPORT: 17 cm
UV: 90%
Gtot: 21%



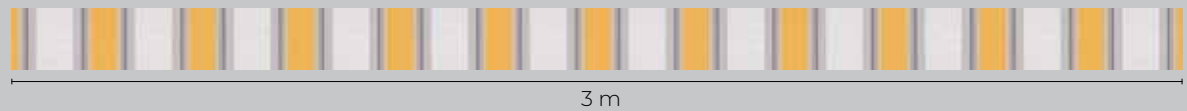
ARGENTINA
2016

RAPORT: 30 cm
UV: 98%
Gtot: 15%



TARANTO
3672

RAPORT: 24 cm
UV: 95%
Gtot: 21%



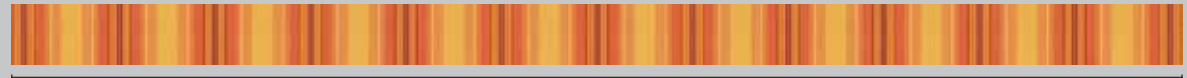
FANTASY

FANTASY



CANBERRA
0452

RAPORT: 24 cm
UV: 98.75%
Gtot: 15.51%

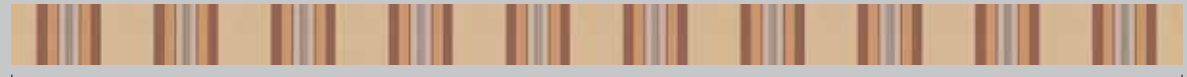


3 m



LISBONNE NATURE
8224

RAPORT: 30 cm
UV: 95%
Gtot: 13%



3 m



DAKAR
2080

RAPORT: 40 cm
UV: 98%
Gtot: 15%



3 m

FANTASY

FANTASY



SALERNO
3861

RAPORT: 30 cm
UV: 90%
Gtot: 20%

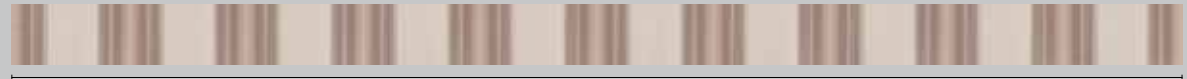


3 m



ALBERTA
5106

RAPORT: 30 cm
UV: 98%
Gtot: 15%



3 m



MANCHESTER
2823

RAPORT: 24 cm
UV: 98%
Gtot: 8%



3 m

FANTASY

FANTASY



SUNBURY
6106

RAPORT: 30 cm
UV: 98%
Gtot: 10%

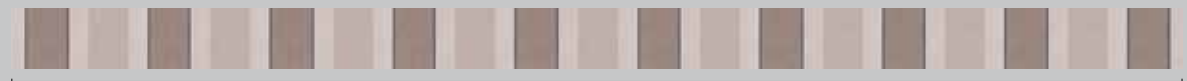


3 m

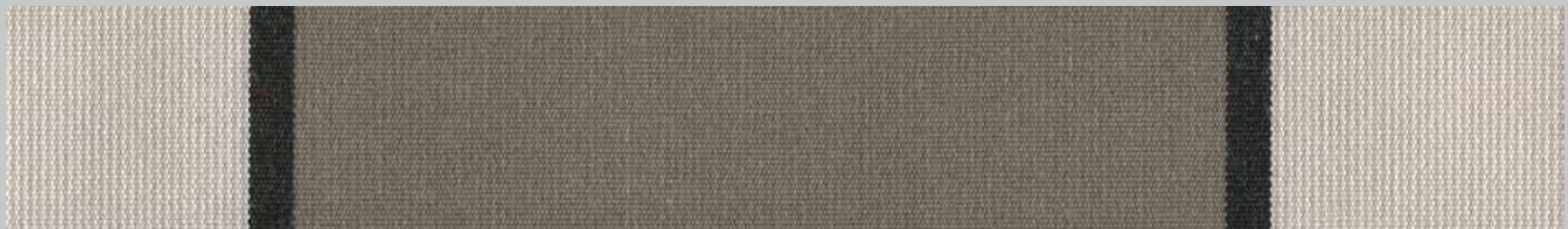


HARDELOT NATURE
8935

RAPORT: 30 cm
UV: 95%
Gtot: 14%



3 m



SIENNE NATURE
D100

RAPORT: 30 cm
UV: 95%
Gtot: 14%



3 m

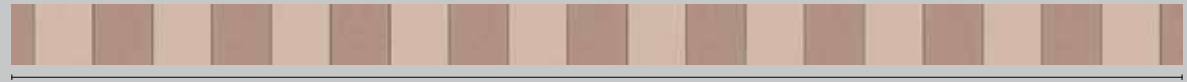
FANTASY

FANTASY

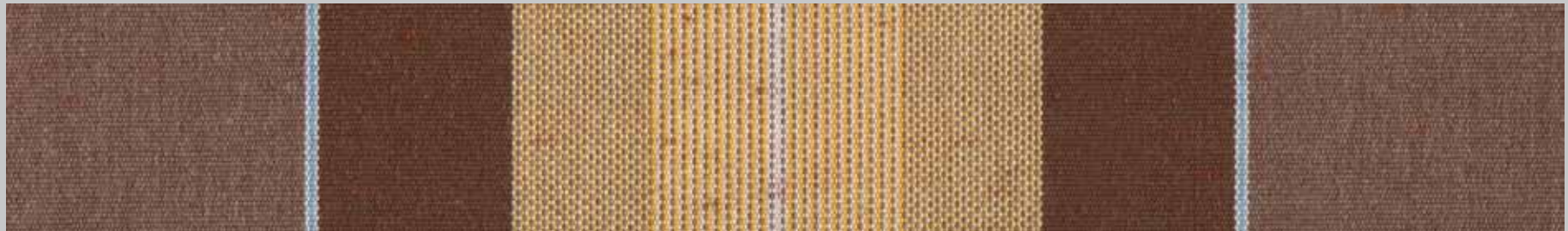


TEXAS
2238

RAPORT: 30 cm
UV: 98%
Gtot: 13%

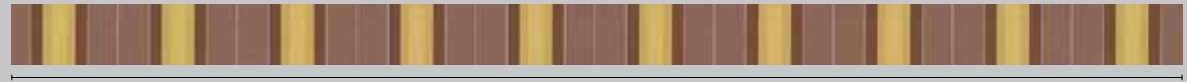


3 m



PERU
2201

RAPORT: 30 cm
UV: 98%
Gtot: 14%



3 m



ANDRIA
3881

RAPORT: 30 cm
UV: 95%
Gtot: 18%



3 m

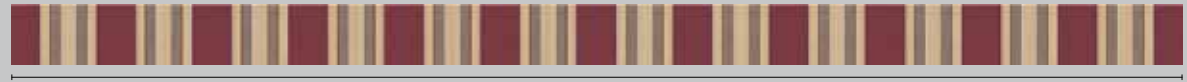
FANTASY

FANTASY



MARTE
2121

RAPORT: 24 cm
UV: 99%
Gtot: 11%

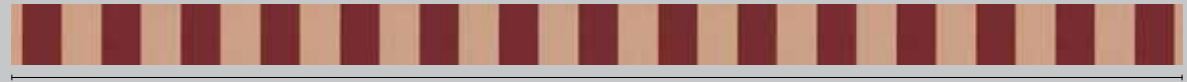


3 m



BOLOGNA
3427

RAPORT: 20 cm
UV: 90%
Gtot: 22%

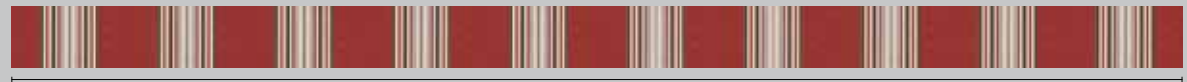


3 m



JAMAICA
2701

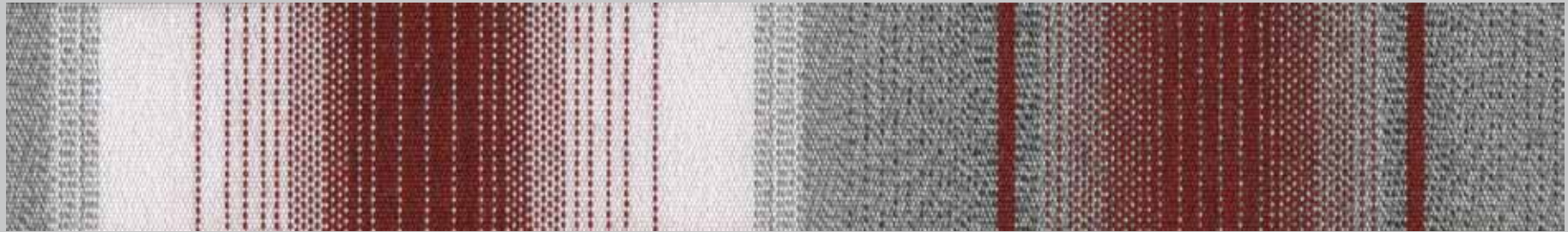
RAPORT: 30 cm
UV: 98%
Gtot: 14%



3 m

FANTASY

FANTASY



BRISBANE
0186

RAPORT: 24 cm
UV: 98.1%
Gtot: 10.26%



3 m



EDMONTON
6711

RAPORT: 30 cm
UV: 98%
Gtot: 13%



3 m



OSLO FIRE
7351

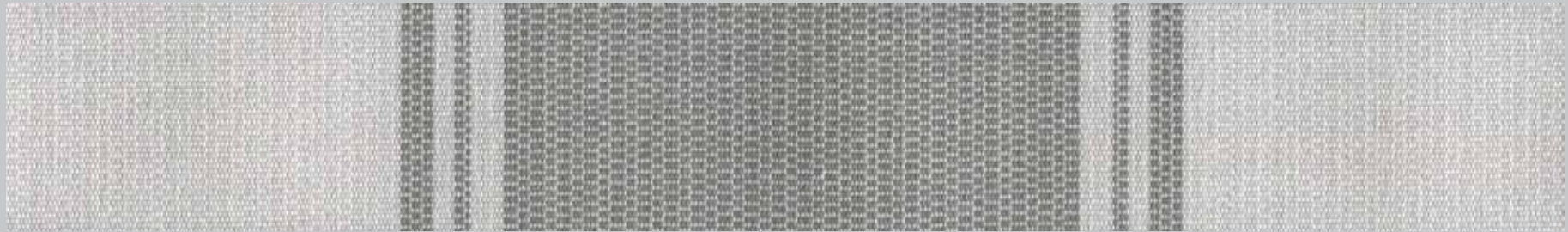
RAPORT: 30 cm
UV: 95%
Gtot: 14%



3 m

FANTASY

FANTASY



WINTONE
0734

RAPORT: 24 cm
UV: 97.5%
Gtot: 12.39%



3 m



FOGGIA
3864

RAPORT: 30 cm
UV: 95%
Gtot: 18%



3 m



BROKEN HILL
0497

RAPORT: 30 cm
UV: 95%
Gtot: 16%



3 m

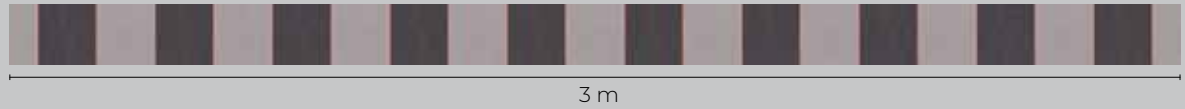
FANTASY

FANTASY



NEW YORK
2174

RAPORT: 30 cm
UV: 98%
Gtot: 14%



3 m



METROPOLITAN
3608

RAPORT: 30 cm
UV: 99%
Gtot: 7%



3 m



GLADSTONE
0493

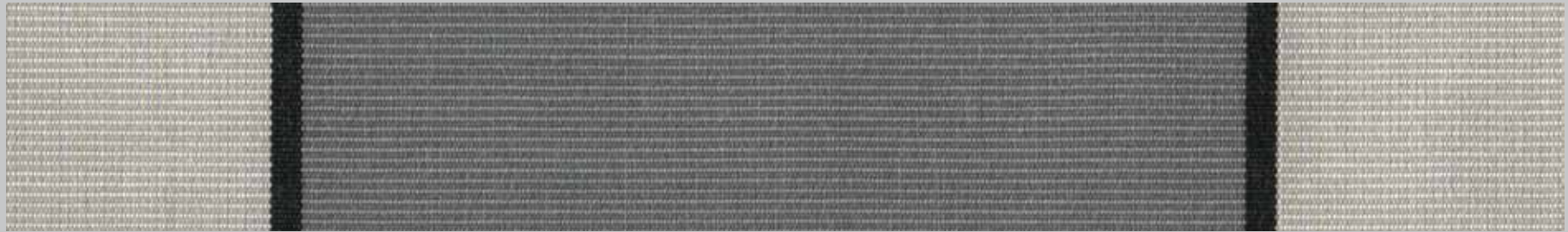
RAPORT: 24 cm
UV: 99%
Gtot: 7.78%



3 m

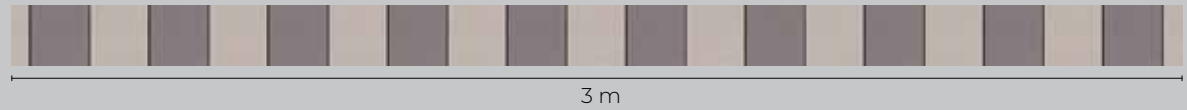
FANTASY

FANTASY



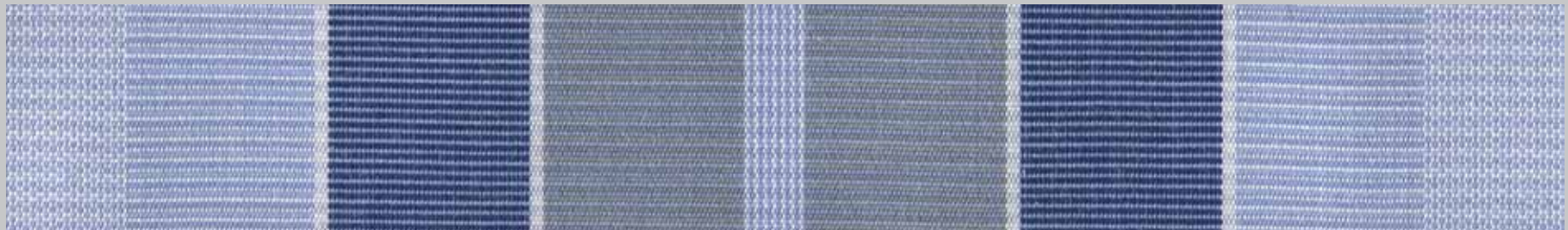
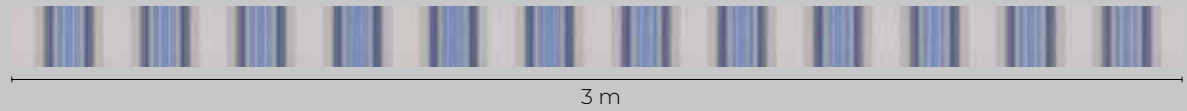
SIENNE STONE
8931

RAPORT: 30 cm
UV: 95%
Gtot: 13%



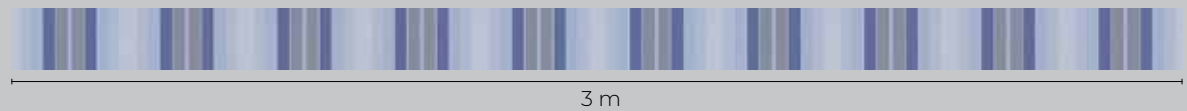
ANCONA
3746

RAPORT: 24 cm
UV: 90%
Gtot: 19%



PADOVA
3875

RAPORT: 30 cm
UV: 95%
Gtot: 17%



FANTASY

FANTASY



RAVENNA
3882

RAPORT: 30 cm
UV: 95%
Gtot: 18%



3 m



FIRENZE
3889

RAPORT: 30 cm
UV: 90%
Gtot: 20%



3 m



MELBOURNE
0054

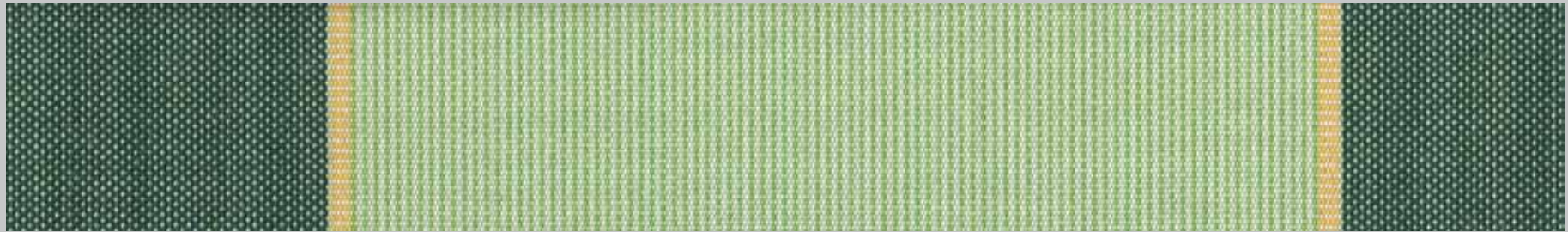
RAPORT: 24 cm
UV: 99%
Gtot: 11.74%



3 m

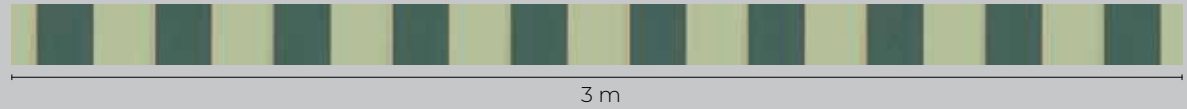
FANTASY

FANTASY



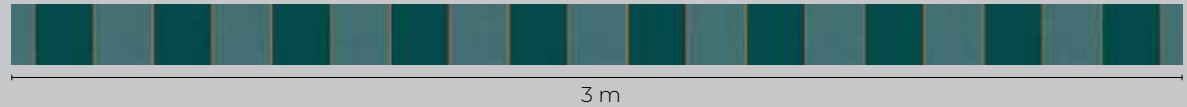
ORLANDO
2191

RAPORT: 30 cm
UV: 98%
Gtot: 11%



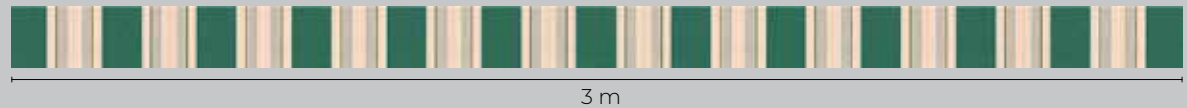
CANADA
2061

RAPORT: 30 cm
UV: 99%
Gtot: 8%



PLUTON
2179

RAPORT: 24 cm
UV: 99%
Gtot: 10%



FABRICS CATALOGUE

Subject to change in view of technical upgrades. Values indicated without tolerance levels are nominal values with tolerance range of $\pm 5\%$. All data presented here is given to the best of our current knowledge for guidance purposes and is not legally binding.

Änderungen die dem technischen Fortschritt dienen, behalten wir uns vor. Werte ohne Toleranzangaben sind Nennwerte mit einer Toleranz von $\pm 5\%$. Die Angaben entsprechen unserem heutigen Kenntnisstand und sollen ohne Rechtsverbindlichkeit informieren.

Sous réserve de toute modification dans le cadre d' améliorations techniques. Les valeurs mentionnées sans tolérance sont des valeurs nominales avec une tolérance de $\pm 5\%$. Les indications correspondent à notre savoir actuel et sont données à titre informatif sans obligation juridique.